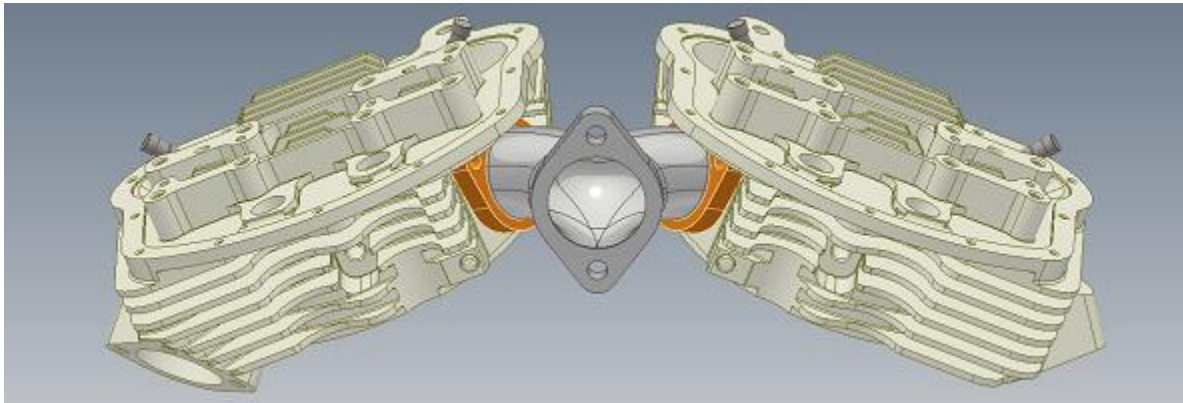




CONNECT WITH US



HOME | SHOP | CONTACT US



## Newsletter #8, June 2020, \*NEW PRODUCTS 2020\*

G'day everyone and greetings from the West side of Rockies. With the ongoing stream of doom-and-gloom, let's just talk about good news for a change - we all need some of that for sure!

As mentioned in the last Newsletter (April 2020), we've added few new products to our line, the MIT Series Headsets certainly being the most exciting items on the list. Just to re-cap, the MIT prefix represents the most refined CNC head-porting we have ever done. The resulting out-of-the-box outputs are great news for your power-hungry inner self!



Right now, the MIT's come in two versions - Shovelhead (3-5/8" bore) and Twin Cam (96-110CUI). Both are bolt-on items, although they have been designed to work with certain aftermarket components (e.g. pistons) in mind; more details on our website. With all the power on the tap, it's probably worth mentioning that we've gone to the great lengths to ensure the best possible longevity of our assemblies.

On a smaller end of our projects, we've started populating our Specialty Tools section. If you do Flow Bench testing, you may want to check out our Valve Opener for the Milwaukee 8 Heads. More to come, please visit often.

Other than that, we're still busy developing the MIT M8 head for the hi-tech crowd, also later this year we're planning to release the MIT PanShovel headset (yes, that's right) for all of you old-school freaks. Stay tuned!!!!

*Keep the rubber side down.  
Speed And Science Team*